

# MFC-J6720DW Technical Specifications

As part of the Print 3.0 range the MFC-J6720DW is designed to save time and help you be more productive in a busy office environment. With an enhanced paper capacity of up to 500 sheets and high yield ink cartridges it can keep up with your print demands without the need to replace them frequently.

Print 3.0 allows you to be more connected than ever before. Scan across your existing wired or wireless network, or print directly from your mobile devices with AirPrint, Google Cloud Print™ or Brother's iPrint&Scan app, making it easier to share your printer across multiple users. You can also connect to your online accounts directly from your machine allowing you to print from or scan directly to Box, Dropbox, EVERNOTE®, Facebook, FLICKR®, Google Drive™ & Picasa™ without the need for a PC.

Manage your documents effectively: the 35 sheet automatic document feeder allows you to scan multipage documents at the touch of a button, making it even easier to archive your documents.

Use the 6.8cm LCD touchscreen to access the intuitive menu system and range of user-friendly, time-saving functions including scan to USB, email or FTP server and preview fax messages.

The MFC-J6720DW complies with the ENERGY STAR and the German Blue Angel environmental standard, ensuring low energy consumption, low noise levels and a recycle-friendly design.

## GENERAL

Memory Capacity	128MB
Connectivity	Hi Speed USB 2.0, Wireless 802.11b/g/n, Ethernet 10/100BASE-TX
Mobile Connectivity	iPrint&Scan app, AirPrint, Google Cloud Print™, Wi-Fi Direct™
Display	6.8cm LCD touchscreen display

## COLOUR PRINTER

Speed (Laser Comparable)*	22ipm mono & 20ipm colour
Speed (Fast Mode)	Up to 35ipm mono & 27ipm colour
2 sided Print	Fully automatic 2 sided print up to A3 paper size
Resolution	Up to 6,000 x 1,200 (Vertical x Horizontal)
Minimum Droplet Size	1.5pl (when used with Brother BP71 paper, see Supplies section)
Direct Photo Print	Print photos direct from a USB Flash memory Drive/Media Cards (See Direct Photo Printing section)

## COLOUR FAX

Modem	33.6kbps
Speed Dials	100 locations for pre-stored numbers
Page Memory	Up to 200 pages (ITU-T Test Chart No 1)
Error Correction Mode	Where machines share the ECM feature, errors during transmission are corrected automatically ensuring received documents are error free
Other Functions	Fax forwarding, remote access, fax retrieval, dual access, I-Fax™, PC-Fax send, PC-Fax receive™, auto reduction, group dials

## COLOUR COPIER

Speed****	12ipm mono and 9ipm colour
Resolution	Up to 1,200 x 2,400dpi (colour and mono)
Multi Copy	Yes 99 copies
Enlargement / Reduction Ratio	25% - 400% in 1% increments
Other Features	N-in-1, Poster Printing

## COLOUR SCANNER

Resolution	Optical: From Flatbed Up to 2,400 x 2,400dpi. From ADF 2400x1200dpi. Interpolated: Up to 19,200 x 19,200dpi
Scan Speed	From 4 seconds Mono & Colour (A4 size, 100 x 100dpi)
Scan to	Email, OCR, Image, File, Media Card, USB Flash Memory Drive, FTP, Network**, Email Server** Web Services
Scan Format	JPEG, BMP, PDF, TIFF, PNG (USB Flash Memory Drive supports PDF Mono & Colour, JPEG, TIFF).

## PAPER HANDLING

Paper Input	250 sheet standard paper tray 250 sheet lower paper tray 1 Sheet A3 Manual Feed 35 sheet automatic document feeder (ADF)
Paper Output	50 sheets
Paper Handling Sizes	Landscape: A4, LTR, EXE. Portrait: A3, LGR, LGL, Folio, A5, A6, Photo, Indexcard, Photo-L, Photo-2L, C5, Com-10, DL Envelope, Monarch
Media Type	Plain, Inkjet, Glossy, Transparency

\* ISO/IEC 24734

\*\*Optional free download available from <http://solutions.brother.com>

\*\*\*Windows® only

\*\*\*\*Approx. cartridge yield is declared in accordance with ISO/IEC 24711

\*\*\*\*\*ESAT ISO/IEC 24735

Contact:

## DIRECT PHOTO PRINTING

USB Media Cards	PictBridge, USB Flash Memory Drive Memory Stick Duo/Pro Duo/Micro, Secure Digital (SD), Secure Digital High Capacity (SDHC), Secure Digital Extended Capacity (SDXC), Multimedia Card, Multimedia Card Plus, Multimedia Card Mobile
Direct Print Format	JPEG
Direct Scanning Format	JPEG, PDF (colour), TIFF, PDF (mono)

## SOFTWARE

Driver Software Included	Brother MFL-Pro Suite
Software - Windows®	Brother ControlCentre4, Nuance® Paperport® 12 SE with OCR
Software - Macintosh	Brother ControlCentre2, NewSoft® Presto!® PageManager9,
Supported Operating Systems	Windows® 8 (32bit/x86) & 64bit(x64) editions, Windows® 7 (32bit/x86) & 64bit(x64) editions, Windows Vista® (32bit/x86) & 64bit(x64) editions, Windows XP Professional (32bit/x86) & 64bit(x64) editions, Windows XP Home, Windows Server® 2003 & 2008 (32bit/x86) & 64bit(x64) editions, Windows Server® 2008 R2 & 2012 (64bit/x64) edition) Mac OS X 10.6.8, 10.7.x, 10.8.x

## SUPPLIES

Standard Cartridges	Black: LC123BK - Approx 600**** A4 pages Cyan / Magenta / Yellow: LC123C/M/Y - Approx 600**** A4 pages
High Yield Cartridges	Black: LC129XL BK - Approx 2400**** A4 pages Cyan / Magenta / Yellow: LC125XL C/M/Y - Approx 1,200**** A4 pages
Brother Paper	BP71GA3: A3 glossy photo paper, 20 sheets BP71GLA: A4 glossy photo paper, 20 sheets BP71GLP: 10x15cm glossy photo paper, 20/50 sheets BP60MA: A4 Matte inkjet paper, 25 sheets BP60PA: A4 inkjet paper, 250 sheet



## WEIGHTS & DIMENSIONS

With Carton	657(W) x 597(D) x 440(H) mm - 20.8Kg
Without Carton	553(W) x 433(D) x 310(H) mm - 16.7Kg

## OTHERS

Power Consumption	Operating - 28W Ready - 5.5W Sleep - 1.5W Off - 0.04W
Sound Pressure Level (Operating)	50dB(A)(Maximum)



**brother**  
at your side

Brother International Europe Ltd

Brother House, 1 Tame Street, Audenshaw, Manchester M34 5JE

Tel: +44 (0)161-330 6531 Fax: +44 (0)161-330 5520

Website: [www.brother.com](http://www.brother.com)

All specifications correct at time of printing. Brother is a registered trademark of Brother Industries Ltd. Brand product names are registered trademarks or trademarks of their respective companies.

# MFC-J6720DW

brother  
at your side



INTRODUCING THE MFC-6720DW -  
DOCUMENT MANAGEMENT  
SOLUTIONS FOR YOUR BUSINESS

WELCOME TO **PRINT 3.0**



## INTRODUCING

# THE MFC-J6720DW

## DOCUMENT MANAGEMENT SOLUTIONS FOR YOUR BUSINESS

The MFC-J6720DW is more than just a printer. With a range of cloud connected functions, it enables you to manage your documents, so you can be productive wherever you are. The MFC-J6720DW is designed to help you work smarter. It is an intelligent, cloud connected device that can help you access and share your documents from wherever you are, enabling you to be more collaborative and stay connected to your office. Welcome to a new age of printing.

## WELCOME TO PRINT 3.0.



### Mobile

Our range of mobile print and scan solutions allow you to access your documents wherever you are to keep you connected to your office. Our mobile print and scan app works across a number of platforms including Apple, Microsoft and Android device to print your documents faster than ever before.



### Work Smarter

The cloud connected MFC-J6720DW makes collaboration quick and easy. Scan directly to a number of cloud services such as Dropbox and Evernote and have paper based content digitised and available in seconds to share with your team in a variety of formats including .pdf, .pptx and .docx.



### Get Noticed

Ensure your documents stand out, with high quality 2-sided printing in up to A3 format to create the impact your business deserves. The MFC-J6720DW also scans and copies up to A3 so you can manage large format documents quickly and easily.



### Save Time

Packed full of time saving features, the MFC-J6720DW helps you make the most of your working day. Super fast print speeds combined with the automatic document feeder help you to manage your documents quickly and easily.



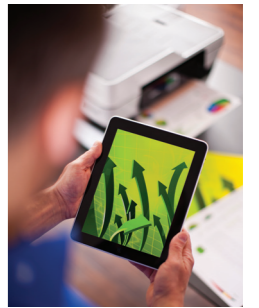
### Reduced Costs

As well as utilising XL ink cartridges capable of printing up to 2400 black and 1200 colour prints, the MFC-J6720DW also includes a number of cost saving features such as 2-sided printing and Ink Save mode which can significantly reduce your ink consumption.



### Key facts

- 22ipm mono and 20ipm colour print speeds
- 2-sided print in up to A3 paper sizes
- 35 sheet Automatic Document Feeder
- 6.8cm touchscreen LCD
- Wi-Fi & Ethernet Network
- Mobile Print & Scan app
- 2400 black and 1200 colour cartridges
- 500 sheet paper capacity



### The Brother Advantage

Introducing Brother Apps & Solutions. The smarter way to manage your paper based content.

#### Scan to Office

An intelligent feature that allows you to scan a hardcopy document, which is then converted into a Microsoft Office file with editable text and images.

#### Scan to Email

Scan a document direct to an email address from the touchscreen with ease.

#### Outline Copy

Allows you to circle the content you require in red and the device will copy just the selected area, saving valuable ink.

#### Outline Scan

Allows you to circle the content you require in red and the device will scan just the selected area for instant impact.